

Ageing, Later Life and Social Change in Germany

Andreas Motel-Klingebiel

Linköping University (LiU)

National Institute for the Study of Ageing and Later Life (NISAL)

German Centre of Gerontology (DZA), Berlin

Outline

- Grand challenges to European societies
- Demographic change
- Social change
- Changing life-courses
- Changing later life
- Threats to quality of life and well-being
- Conclusions

Grand challenges to European societies

- *Grand challenges to European societies*
- *Demographic change*
- *Social change*
- *Changing life-courses*
- *Changing later life*
- *Threats to quality of life and well-being*
- *Conclusions*

- The European Union defines several grand challenges
- Grand challenges
 - involve a combination of major public and private interests
 - are seen as key for realising future economic growth
 - are concerned with important social and/or environmental problems
- Overall strategy: Investing in research and innovation to meet the grand challenges

Grand challenges to European societies

- *Grand challenges to European societies*

- *Demographic change*

- *Social change*

- *Changing life-courses*

- *Changing later life*

- *Threats to quality of life and well-being*

- *Conclusions*

- Grand challenges to the European societies according to the European Commission
 - Health, demographic change and well-being
 - Food security, sustainable agriculture, marine and maritime research, and the bio-economy
 - Secure, clean and efficient energy
 - Smart, green and integrated transport
 - Inclusive, innovative and secure societies
 - Climate action, resource efficiency and raw materials
- Demographic change and well-being are in an exposed position

- *Grand challenges to European societies*
- **Demographic change**
- *Social change*
- *Changing life-courses*
- *Changing later life*
- *Threats to quality of life and well-being*
- *Conclusions*

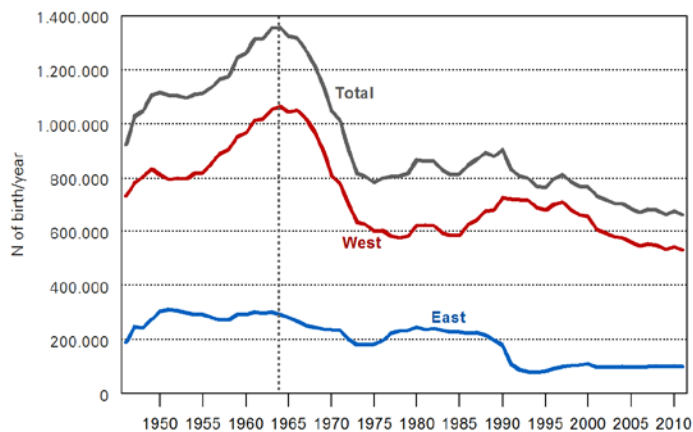
Demographic change

- Demographic change in Europe
 - Overall trend: shrinking fertility, expanding longevity, increasing migration
 - But heterogeneous developments in EU-societies in all three facets
- The European JPI MYBL defines four major areas of concern where research is needed
 - Quality of life, health and welfare
 - Economic and social production
 - Sustainable welfare
 - Governance and institutions

Demographic change

- *Grand challenges to European societies*
- **Demographic change**
- *Social change*
- *Changing life-courses*
- *Changing later life*
- *Threats to quality of life and well-being*
- *Conclusions*

- The development in Germany
 - Shrinking population: declines in population size by about 20% by 2060
 - Ageing population: increases in number and share of (very) old people
 - Increasing heterogeneity: growing cultural and ethnic diversity as well as social inequality
- Birth rates and the German baby boom



Social change

Ageing society and productivity in global competition

Distributions and social structure

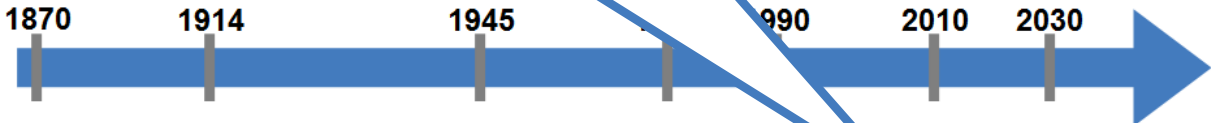
New individual/collective risks and their consequences

... century'

...

the early century

- Grand challenges European societies
- Demographic change
- **Social change**
- Changing life-course
- Changing later life
- Threats to quality of life and well-being
- Conclusions



Old age as a social security issue

Old age as golden life phase

Old age as a matter of dispute

The World War II cohort 1936-45
 The post-war cohort 1946-55
 The baby boomer cohort 1956-1965

Changing life-courses

- *Grand challenges to European societies*
- *Demographic change*
- *Social change*
- **Changing life-courses**
- *Changing later life*
- *Threats to quality of life and well-being*
- *Conclusions*

- Working life
 - Expansion of education
 - Increasingly difficult entries into paid labour
 - Increasing risks of unemployment
 - Changes in female employment
 - Increase of fixed-term- and self-employment
 - Changing pathways into retirement
- Family life
 - Postponement of first birth
 - Declines in number of children
 - Increases in childlessness
 - Increasing instability of partnerships
 - Loss of importance of life-long marriage
- Plurality and instability

Changing later life?

- *Grand challenges to European societies*
- *Demographic change*
- *Social change*
- *Changing life-courses*
- ***Changing later life***
- *Threats to quality of life and well-being*
- *Conclusions*

- Cohort change caused by long-term changes in living conditions in a historical perspective
 - Historical settings from the late German Empire to the unified Federal Republic
 - Development of social security systems
 - Changing cultural and normative settings
- Change due to short-term effects as a result of institutional development and period effects
 - Financial crises
 - German unification
 - Cutbacks of social security

Threats to quality of life and well-being

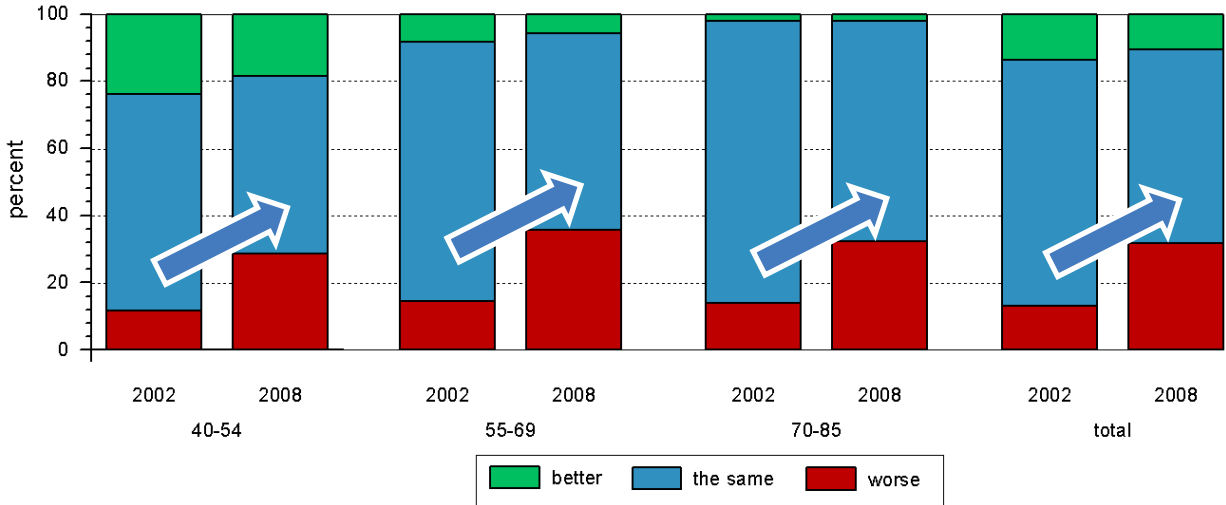
- *Grand challenges to European societies*
- *Demographic change*
- *Social change*
- *Changing life-courses*
- *Changing later life*
- ***Threats to quality of life and well-being***
- *Conclusions*

- How can modern societies sustain individual and social welfare in the context of current and enduring changes?
- Many of the issues that need to be discussed cumulate in the analysis of life-courses and their outcomes
- Are changes threatening quality of life and well-being in later life?

Threats to quality of life and well-being

- *Grand challenges to European societies*
- *Demographic change*
- *Social change*
- *Changing life-courses*
- *Changing later life*
- ***Threats to quality of life and well-being***
- *Conclusions*

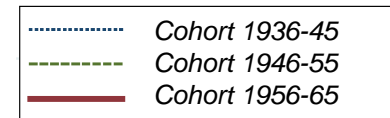
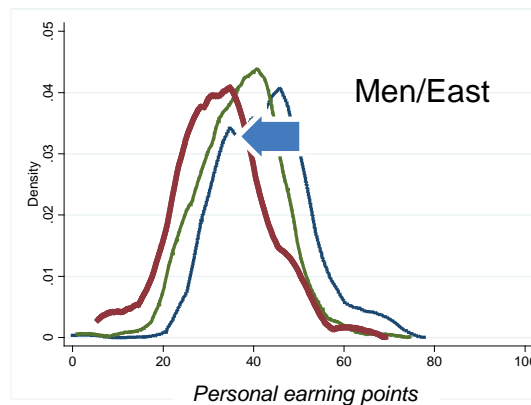
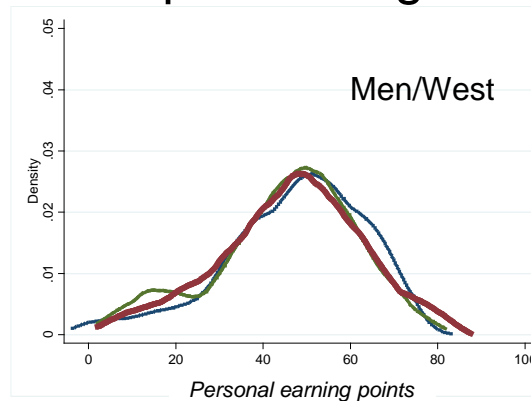
Insecurity and declines in future prospects in standard of living



Threats to quality of life and well-being

- *Grand challenges to European societies*
- *Demographic change*
- *Social change*
- *Changing life-courses*
- *Changing later life*
- ***Threats to quality of life and well-being***
- *Conclusions*

Declines in pension rights at age 67 (est.)



- *Grand challenges to European societies*
- *Demographic change*
- *Social change*
- *Changing life-courses*
- *Changing later life*
- *Threats to quality of life and well-being*
- **Conclusions**

Conclusions

- Demographic change in Germany as well as in Europe is a grand challenge
- It is intertwined with general social change and appears jointly with other challenges
- Individuals face increasing risks over the life course
- Material resources for well-being in later life are shrinking due to reforms in social security systems while others (health, social networks, education) seem to remain stable
- Increasing risks reflect on future prospects and will most likely affect behaviour and well-being in later life



Linköping University

expanding reality

andreas.motel-klungebiel@liu.se

www.liu.se