

How Did Japanese Social Policies Effect on Well-being for Older Persons?

Takeo Ogawa, Ph.D.

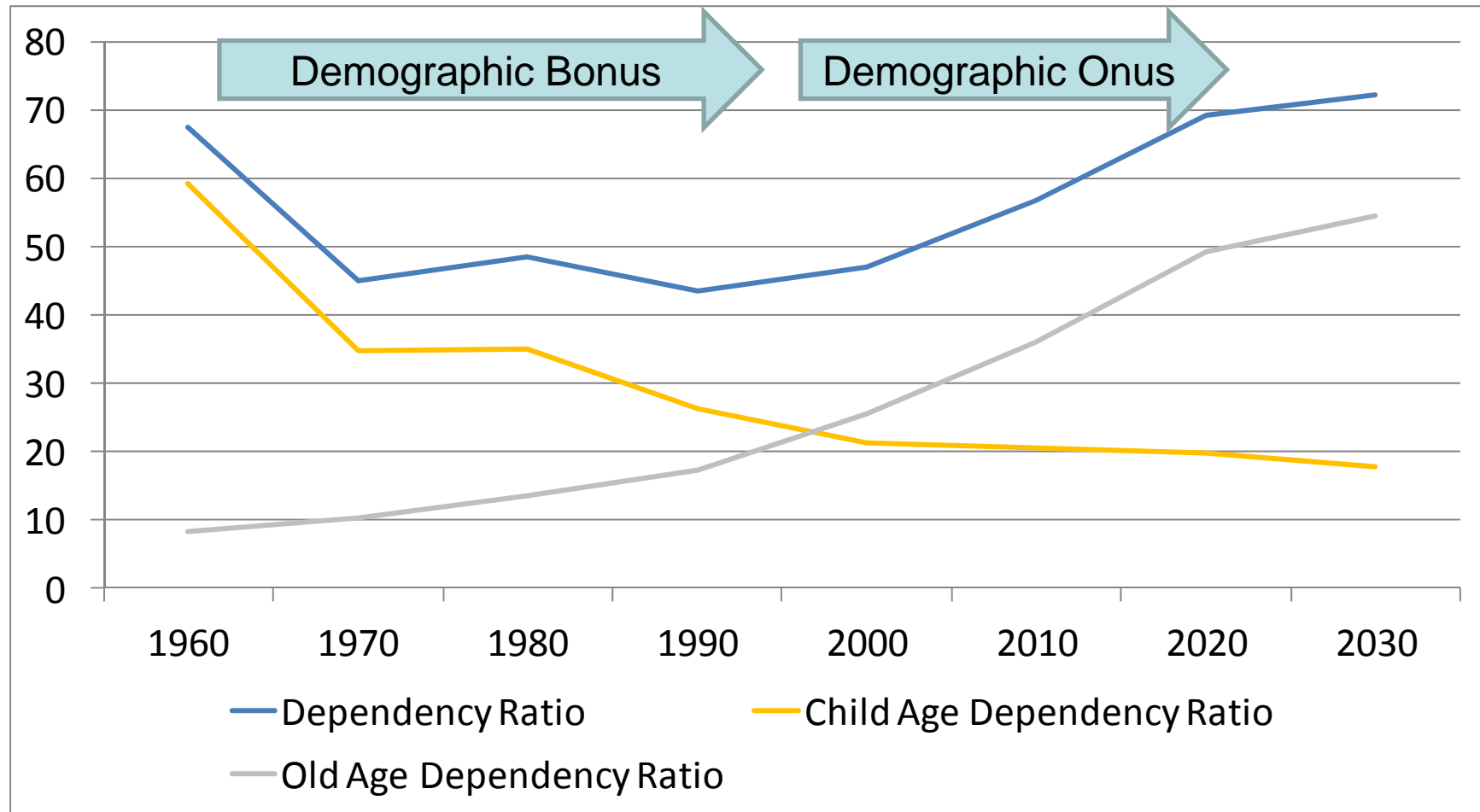
Professor, Kumamoto Gakuen University



Well-being in the Demographic Transition

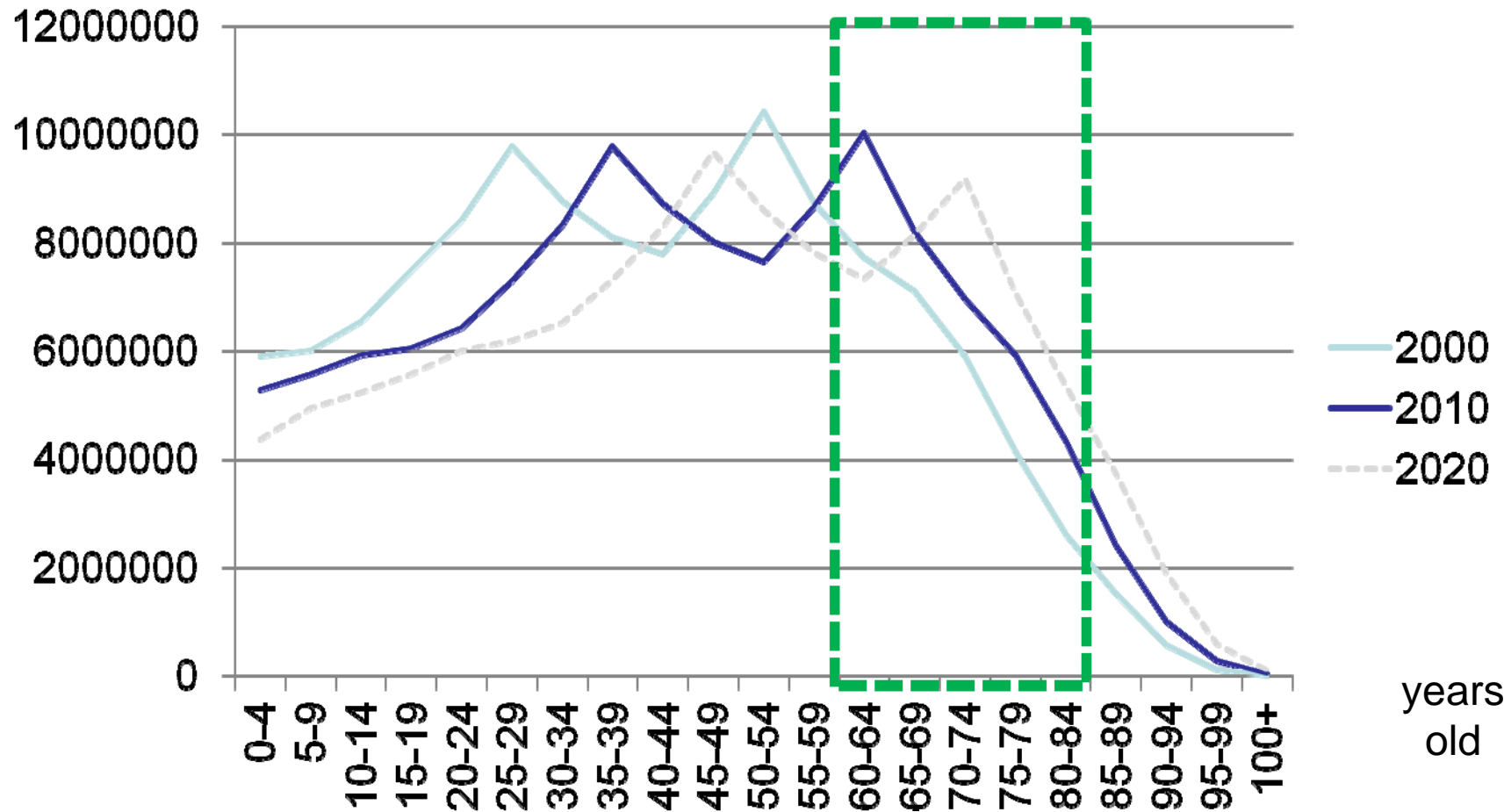
- Japan has exhausted the demographic bonus. And Japan should endure the demographic onus over a long time.
- Japanese government is challenging to reform the whole support system for older persons because of its social expenditures.
- In a decade from 2000 to 2010, how did Japanese social policies effect on the well-being for older persons?

Demographic Bonus & Onus



Statistic Bureau, "Census Data",
& National Institute of Population and Social Security Research

Age Population Change in Japan 2000-2010



Statistic Bureau, "Census Data",
& National Institute of Population and Social Security Research

Aged Society Basic Law in Japan

	Strategies from 2000 to 2010
Work & Income	Activation for Older Persons to be Employed. Comprehensive Reform of Social Security and Tax
Health & Welfare	Start and Reform of Long-term Care Insurance System. Health Care Reform. Community-based Comprehensive Care System.
Learning & Involvement	Enhancing Social Participation. New Public/Common Activities.
Life Environment	Inclusive Design. Housing Plan for Latter Life.
Promoting Research	Promoting Age-friendly Industry Preparing Super-aged Society

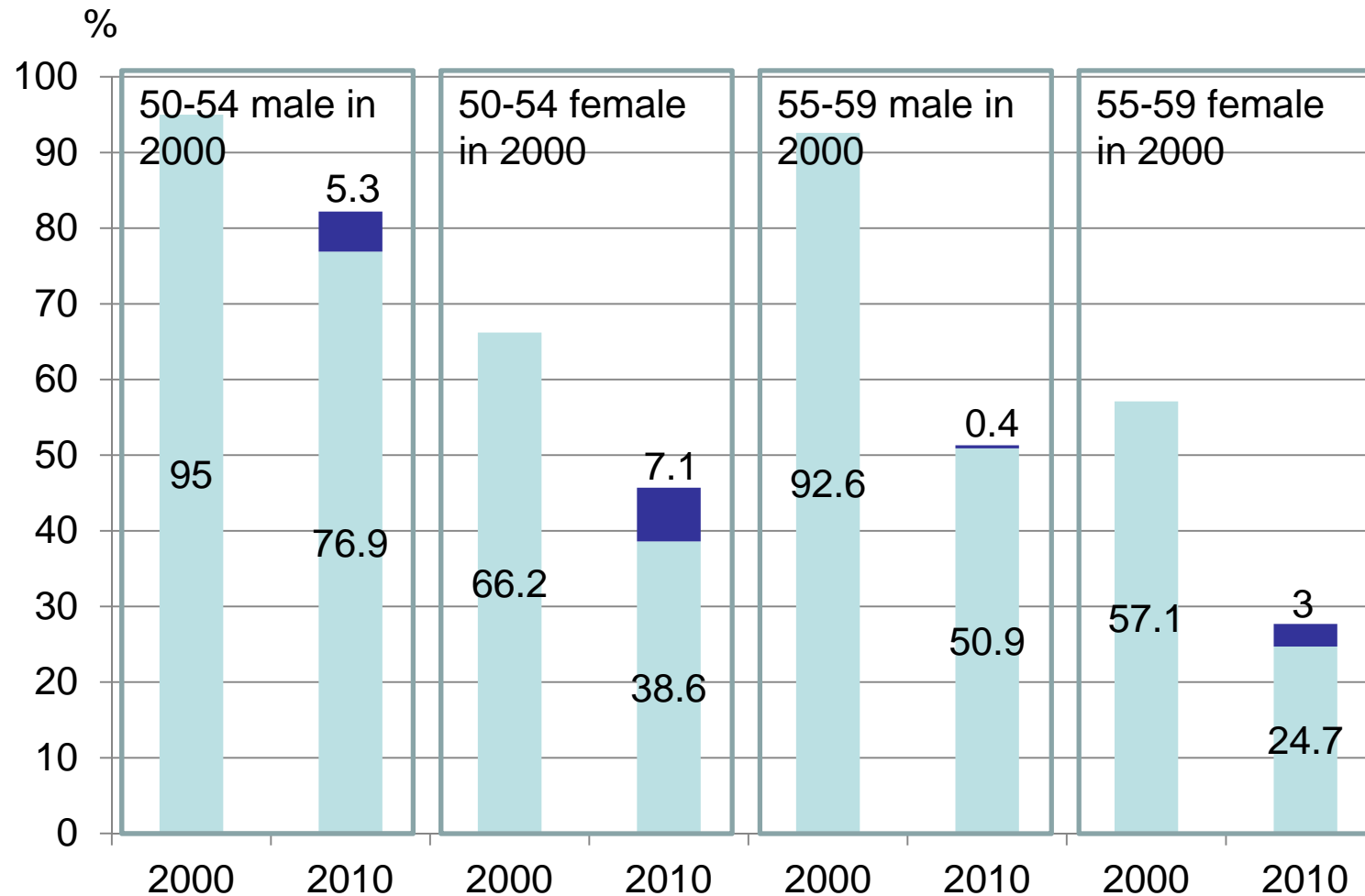
Japanese Social Policy: 2000-2010

- 2000 Long-term Care Insurance System.
- 2004 Pension Reform. Law Concerning Stabilization of Employment of Older Persons.
- 2005 Long-term Care Reform.
- 2006 Barrier Free Act.
- 2007 Healthy Japan 21.
- 2008 Medical Care System for the Older Old. Reform of Long-term Care & Social Welfare Service for the Elderly.
- 2011 Assisted Living
- 2012 Comprehensive Reform of Social Security & Tax

Methodology

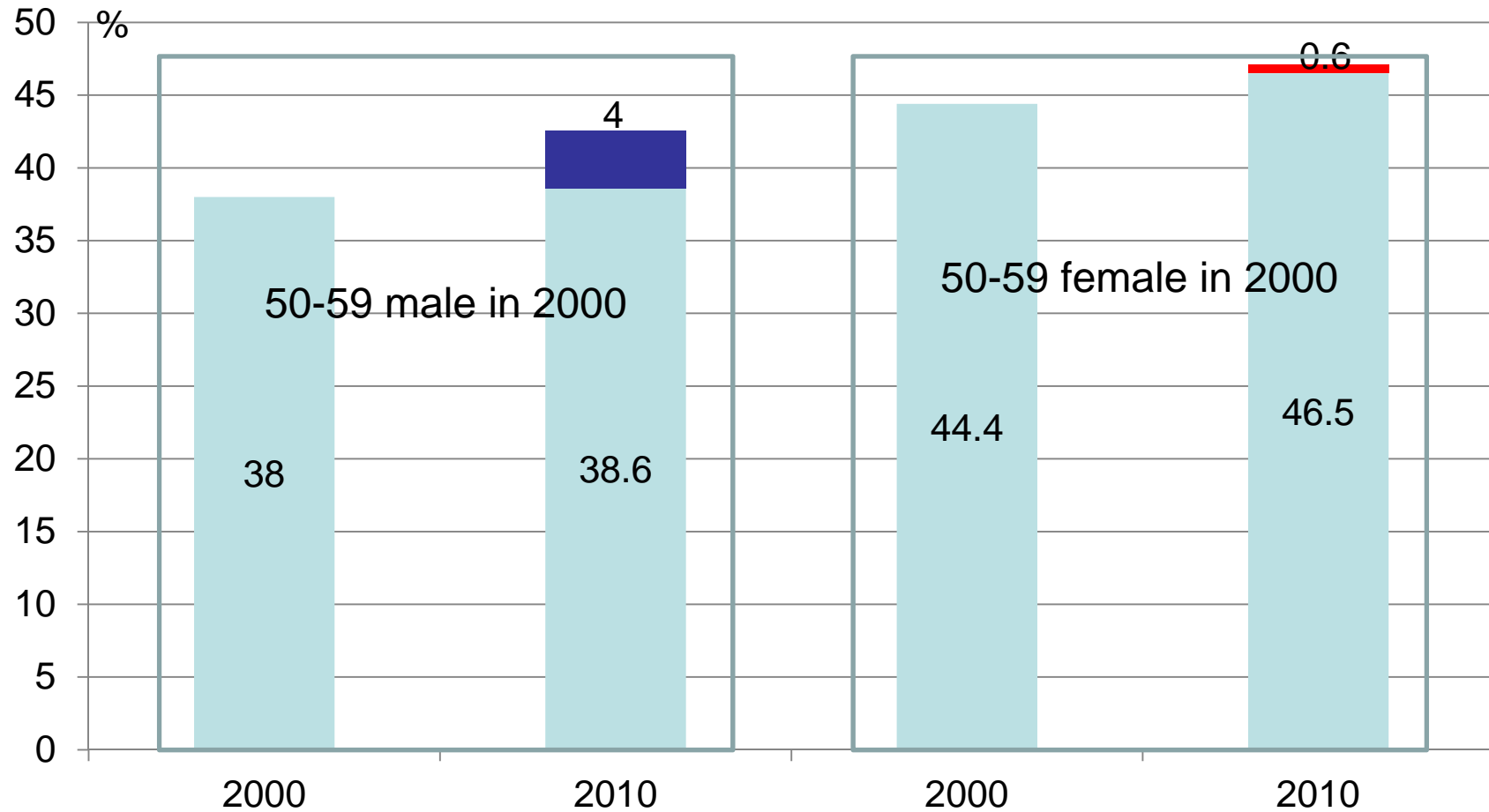
- **Target:**
Cohort of 50+ years old in 2000
- **Social Policies:**
Activation for 60+ persons to be Employed
Long-term Care for 65+ persons
Enhancing Social Participation for 60+ persons
- **Indices of Well-being:**
Healthier, Workability, Time Usability, Satisfaction,
Worry/Anxiety and Integrity
- **Evaluation:**
Cohort Analysis

Effect of the policy for advancing continuous employment of older persons



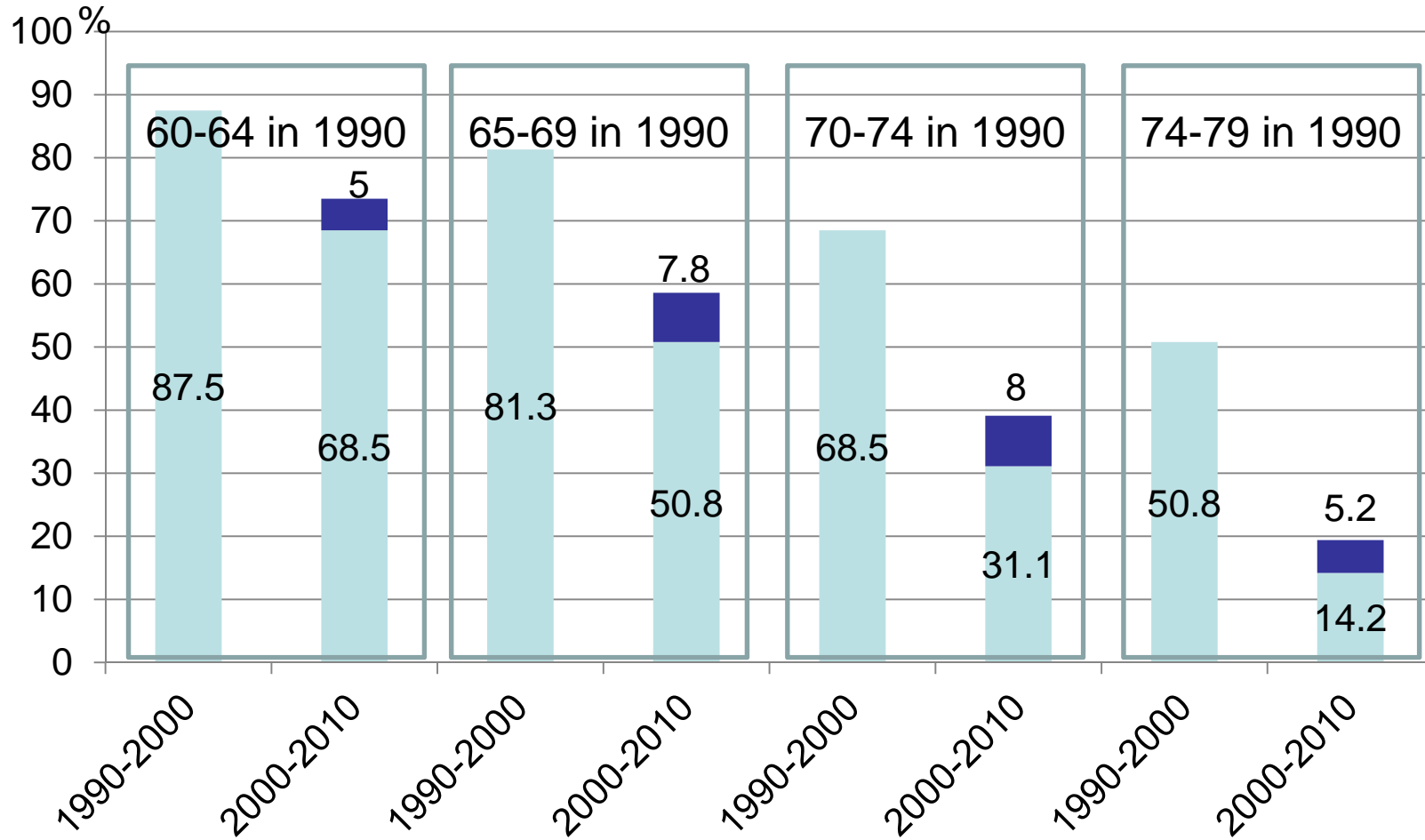
Statistic Bureau, Census, 2000 & 2010.

Satisfaction of Income



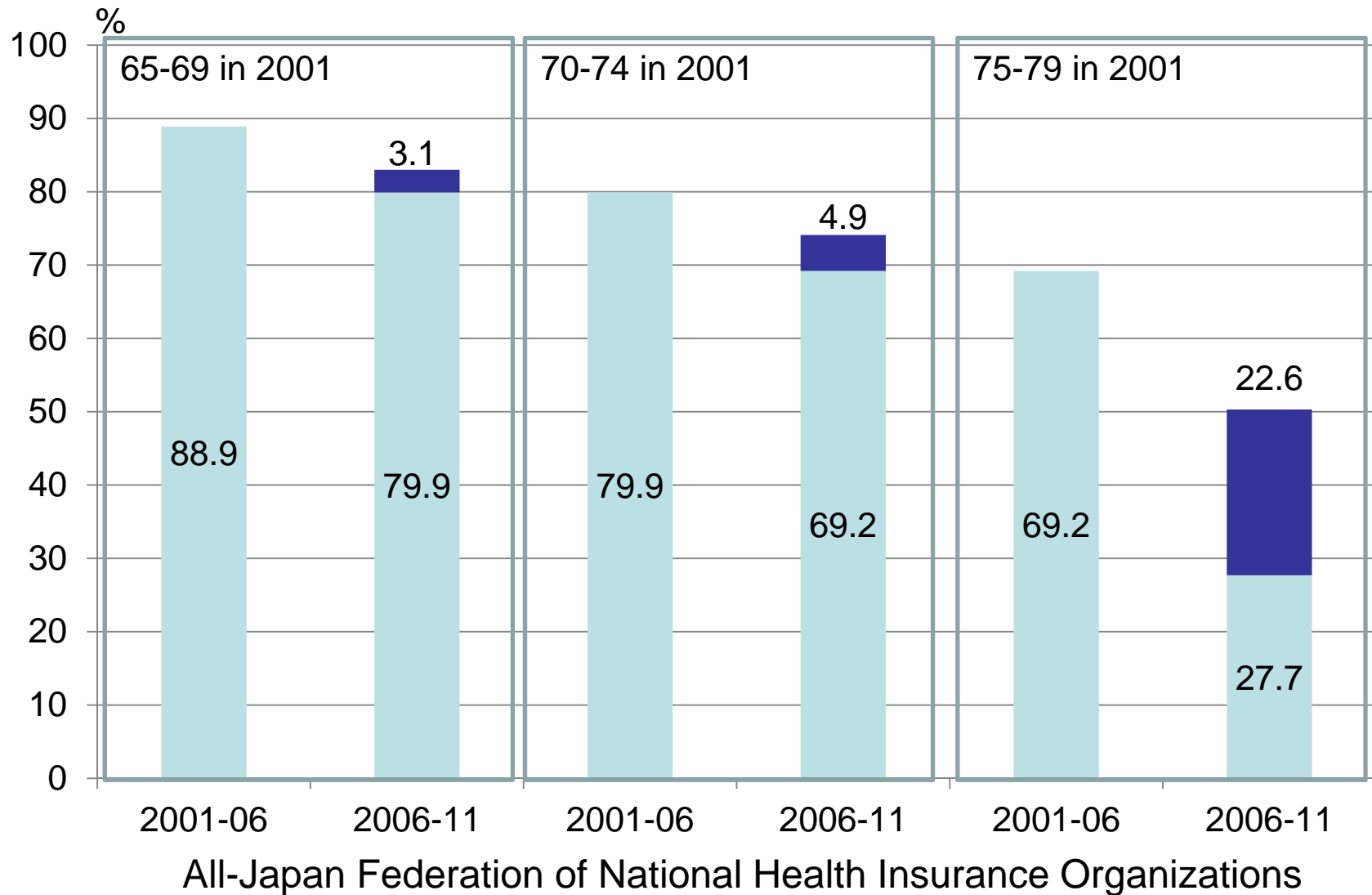
Cabinet Office, "Public Opinion Survey Concerning People's Lifestyles",
2000 & 2010

Surviving Rate

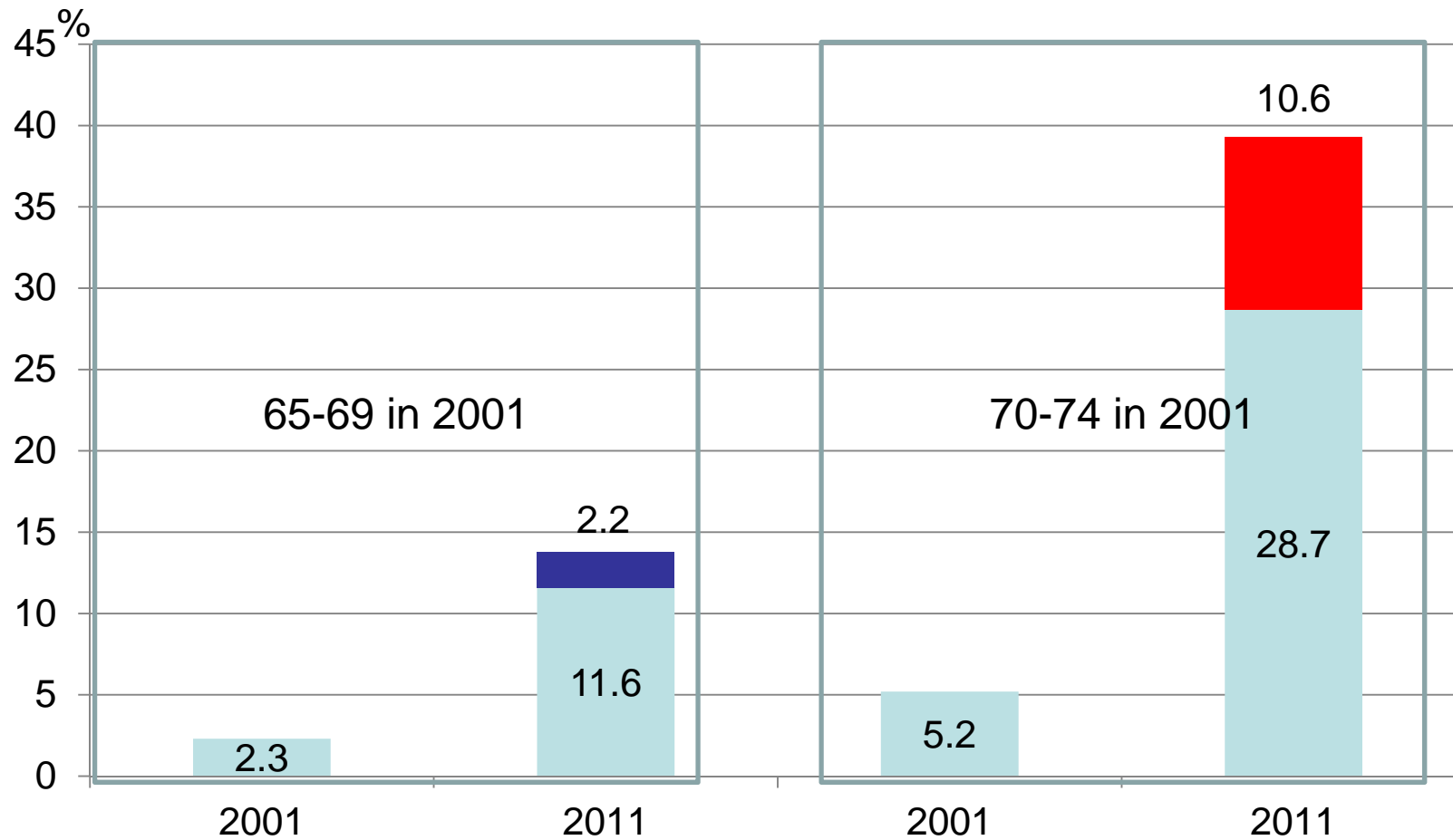


Statistic Bureau, "Census Data", 1990, 2000 & 2010

Healthy Surviving Rate

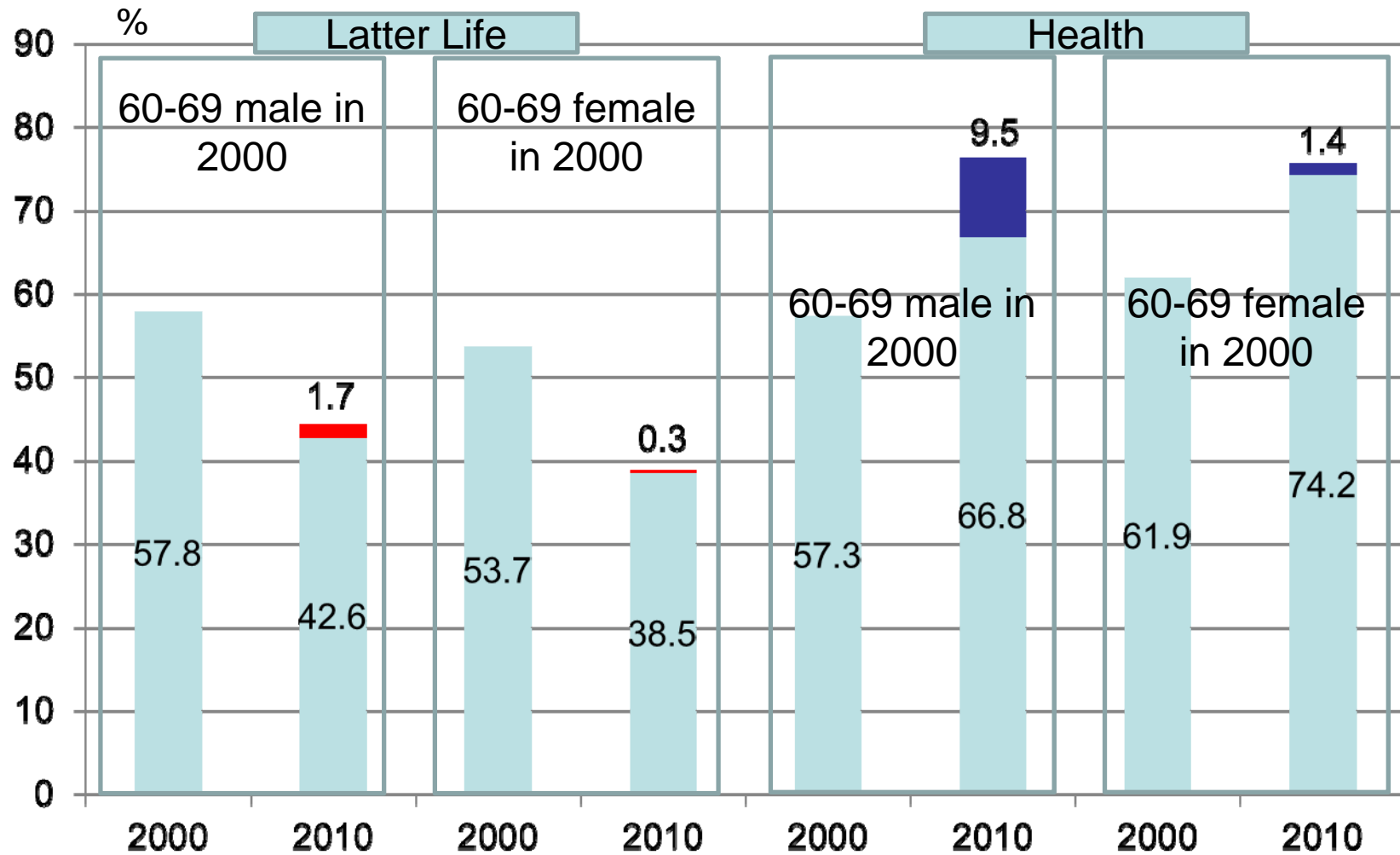


Care-needed Rate



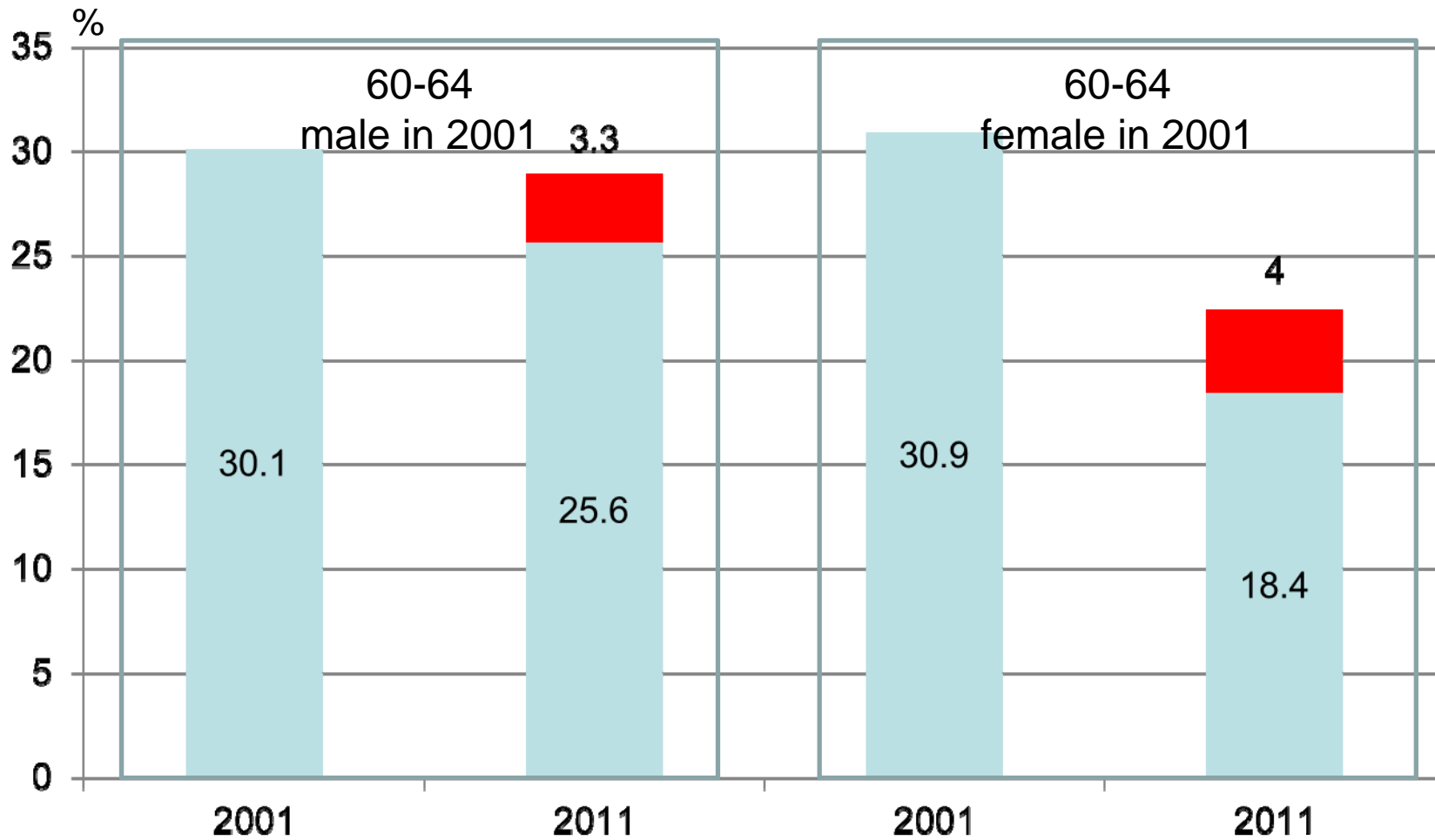
All-Japan Federation of National Health Insurance Organizations

Worry/Anxiety about Latter Life & Health



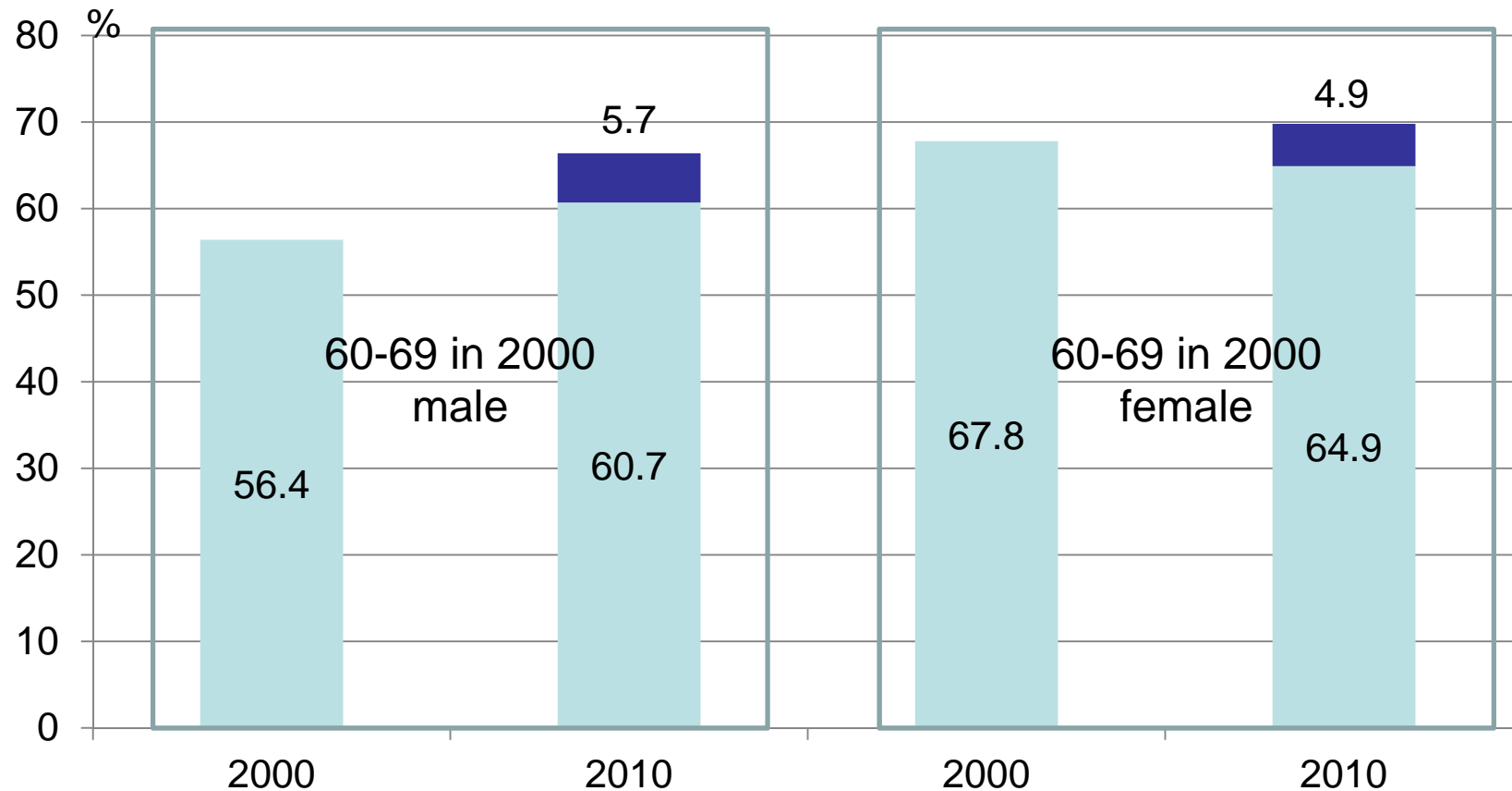
Cabinet Office, "Public Opinion Survey Concerning People's Lifestyles"
2000 & 2010

Volunteerism Rate



Statistic Bureau, "Survey on Time Use & Leisure Activities". 2001 & 2011

Integrity (Fullness Sense of Life)



Cabinet Office, "Public Opinion Survey Concerning People's Lifestyles",
2000 & 2010

Conclusion

- Continuous Employment Policies mitigated a little bit of the decline for the male boomer-generation during 2000-2010. Then, they are satisfied about their income much more than their antecedent generation. However, the female boomer-generation are lesser satisfied than their antecedent generation.

- Health and Long-term Care Policies for 70+ persons have accomplished its aim during 2000-2010, excepting for 65-69. Nevertheless, older persons worry about health still.
- Volunteerism of 60-64 was promoted a little bit for the young old.
- However, it cannot maintain the involvement level of their antecedents.

- Nevertheless, they do not worry about their latter life.
- Also, they are enhancing the fullness sense of life in a decade.
- Therefore, it can be said that the well-being of Japanese older persons is reaching at the saturation point now.

- The fullness sense of life of 60s is enhanced during 2000 - 2010.
- Therefore, it can be said that the well-being of Japanese older persons is reaching at the saturation point now.

Comment

- Rather, the government should focus on the working younger generations, which are enduring their unstable life. It is a reason why The General Principles Concerning Measures for the Aging Society in 2012 added one more basic measure as the constructing infrastructure for all generation to be included.