

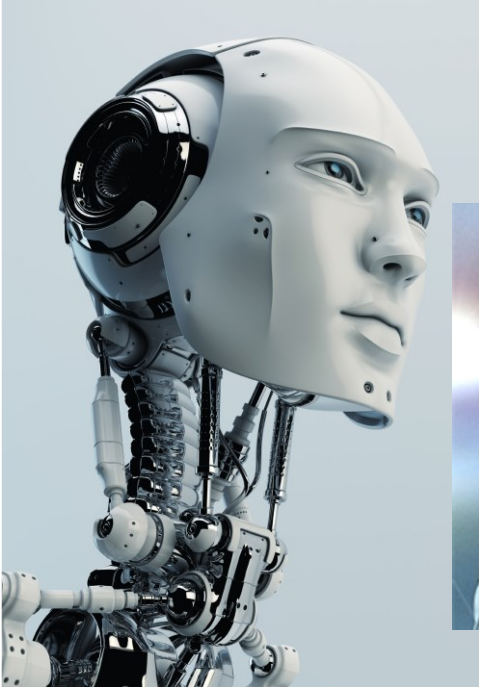
Peter Remmers
25.06.2021

Should we embrace or reject public images of robots?

**Ideas from the project RoMi on
designing a robot for health care
institutions**

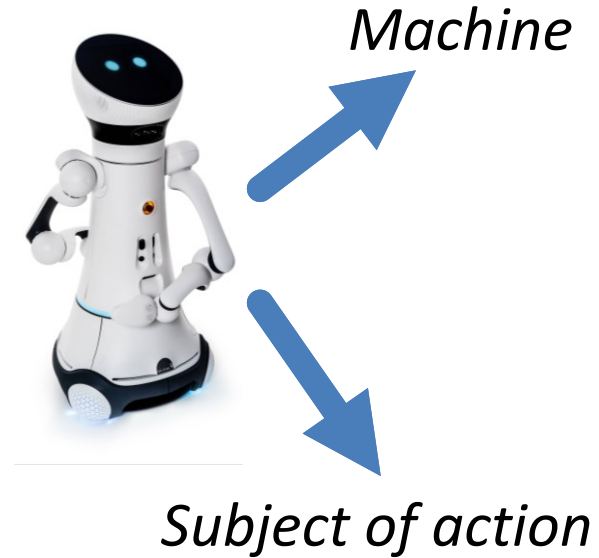


Robots as artificial persons

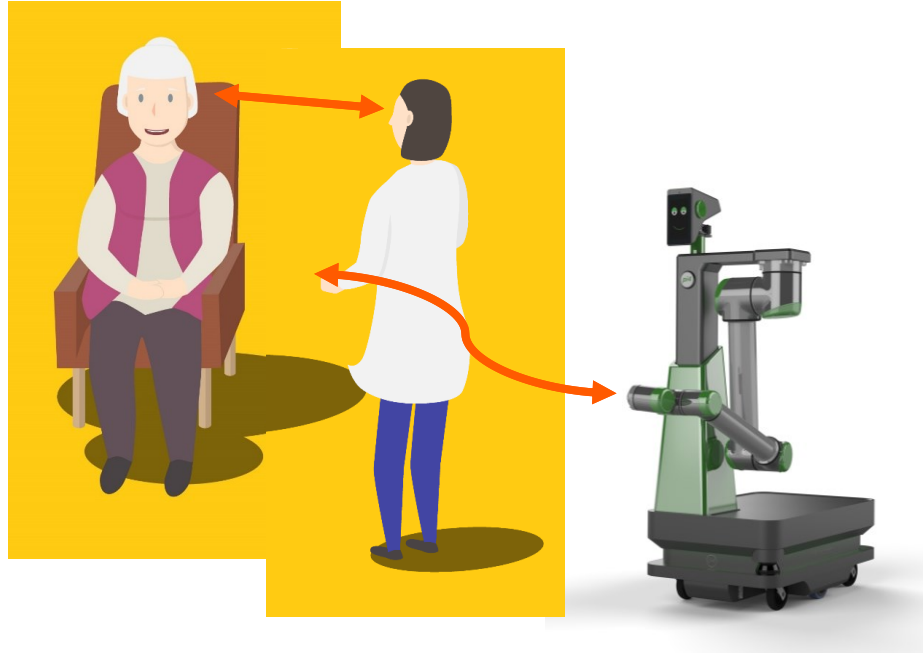


But we cannot escape the mythical image

- A (social) robot is a machine that is supposed to be treated as a subject of action in social contexts.
- A strict opposition between critical rejection and naïve affirmation is a dead end



Ideas from the project *RoMi*



The robot is meant to be “social” in the sense that it facilitates social interactions between people (assistance, support)

(Van Wynsberghe, 2020)