

Visions of Autonomous Driving in Japan

Yukari Yamasaki

INSTITUTE FOR TECHNOLOGY ASSESSMENT AND SYSTEMS ANALYSIS (ITAS)

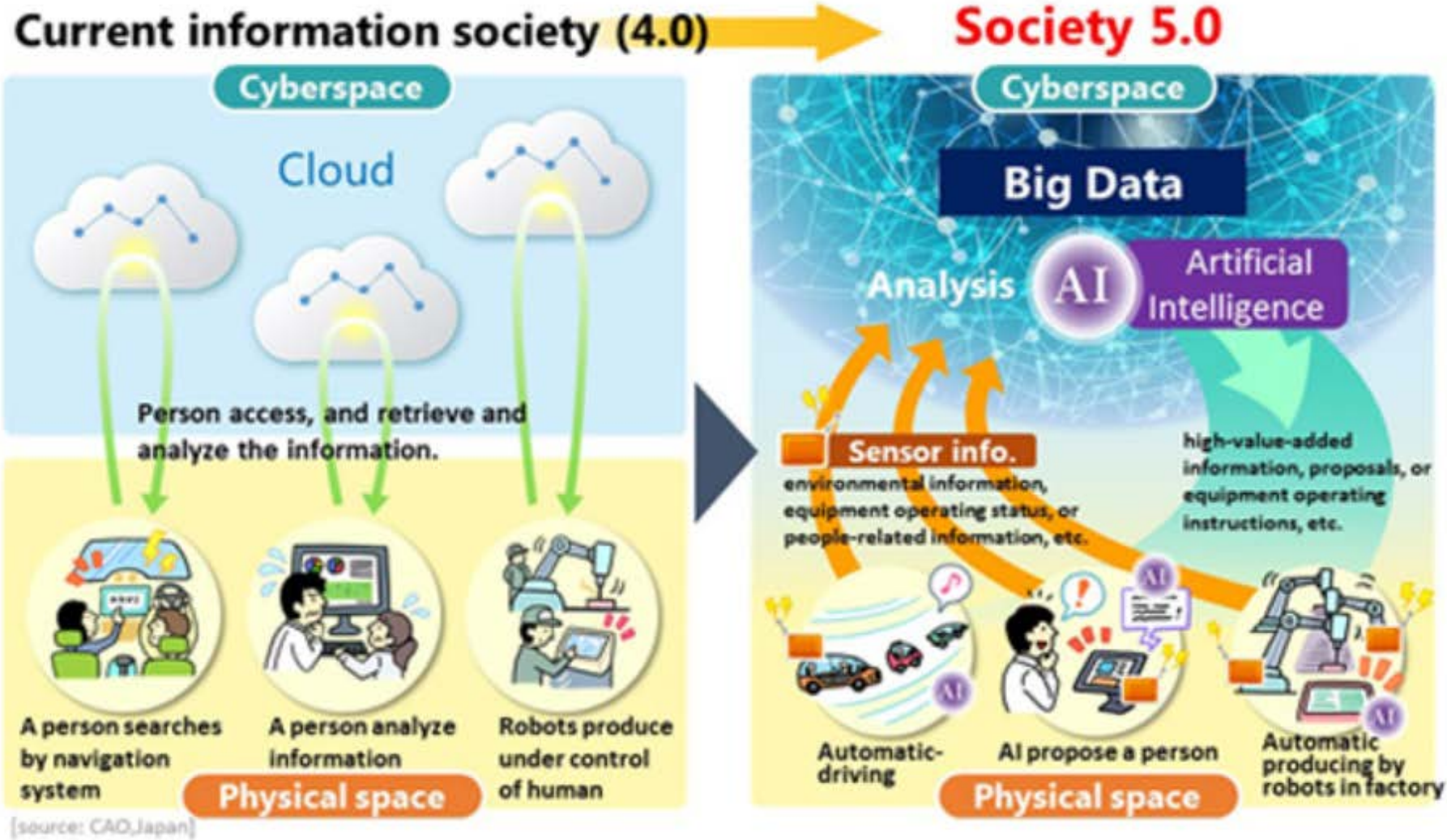


‘*Jidai no Chōryū ni Noru*’ (ride tidal current of the times)

- “One of the characteristics of the Japanese worldview is the belief that the outside world is moving in a certain big flow – the world at large. Moreover, this current itself sometimes changes, like the Kuroshio Current changing its course, which brings about **a new era**, but we Japanese cannot easily change the current itself. Rather, what we can do is to **recognize the direction and nature of the current, and especially the changes in it, as quickly and accurately as possible**. In other words, we should have a **correct understanding of the times, and change our own ways of being and acting accordingly**.”
(Kumon, 1994)



Vision: Society 5.0



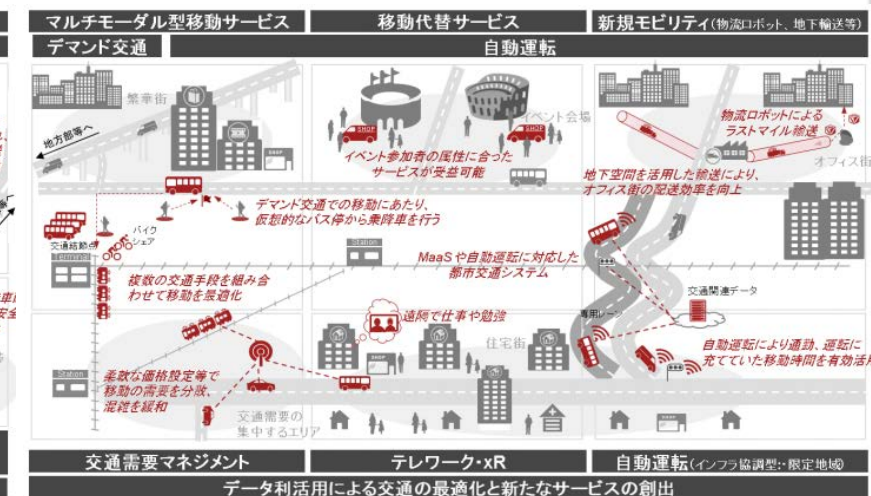
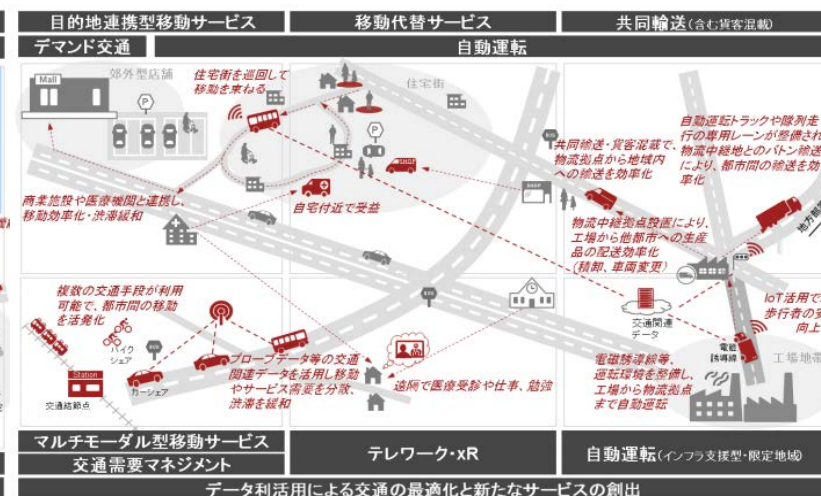
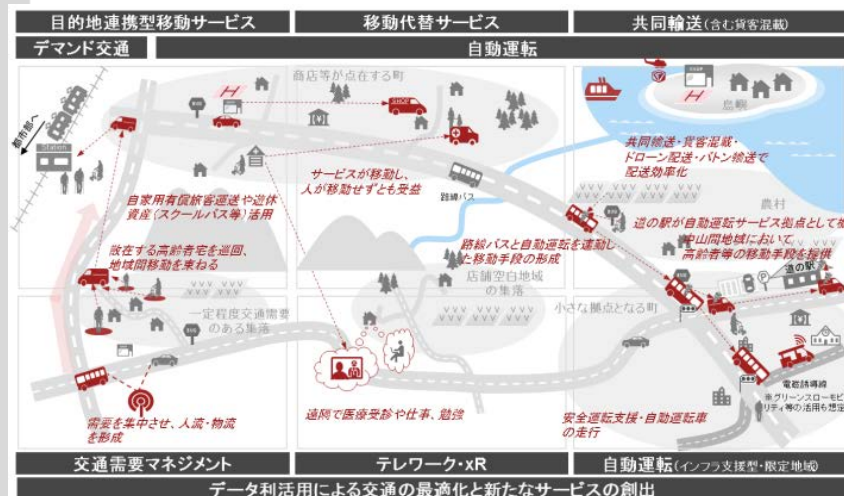
source: https://www8.cao.go.jp/cstp/english/society5_0/index.html

Future Mobility Vision in 2030

Rural areas / provincial cities

Urban areas in which transport is depending on private vehicles

Urban areas in which public transportation is widely used



(Public-Private ITS Initiative/Roadmaps 2020)

- Based on information of state-of-the-art examples from overseas collected by consulting (PwC)
- Study meetings with the Cabinet Secretariat, in which about eight people participated (Minutes of Road Traffic WG meeting, 04.03.2020)