

“Landscape Farming”

the way to enrich biodiversity,
environment, and relationship
through farming

O2Farm ERI OTSU

Eri & Kot Otsu

- Born in Germany
- Raised in Tokyo
- Graduated KEIO univ
- Fell in love with uni colleague
- Married after graduation.
- Master degree at Technical Uni of Munich
- Succeed family farm from Kota's uncle in 2003



< college
colleague >

O2Farm



over 6.5ha paddy fields
(organic rice) and
20 mother cattle (+calfs)



Almost
middle of
Kyusyu
Island





Nature positive agriculture

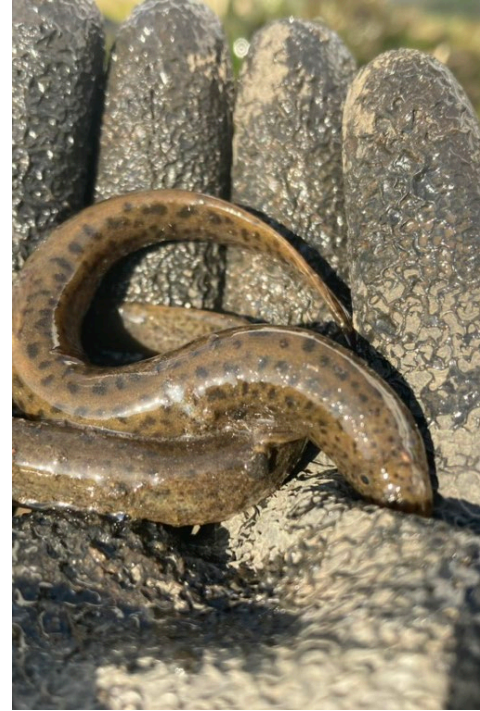
- No or little pesticide
- Organic fertilizer
- No chemical disinfection
- Direct marketing = face to face relationship

GIAHS

Globally Iimportant Agricultural Heritage System

Since 2013





Paradise for
rich biodiversity

Paradise for ourselves

Work



Fresh water



Fresh food



drink



Fresh air



Family



Paradise for kids!

I used to call them
“little farmers”

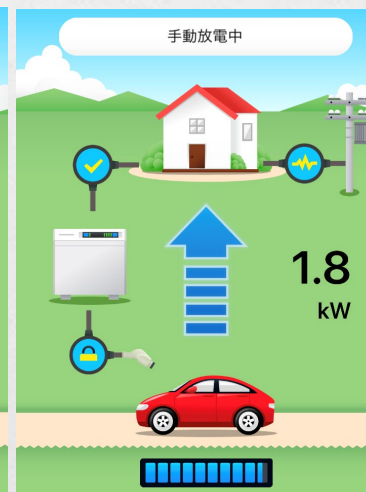
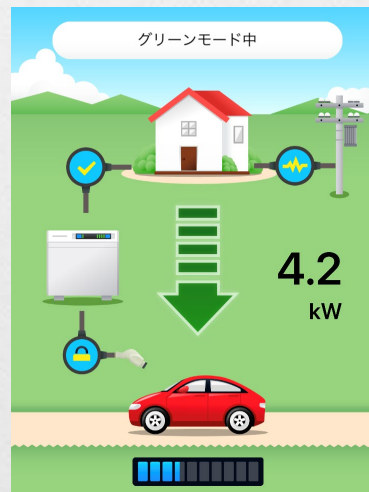


Agriculture as our fundamental mission



And something more from there

Carbon neutral farming & life





Research works

- biodiversity
- landscape
- water resources
- forest
- N-flow

etc.



Farmstay and internships

Little Farmer's Camp

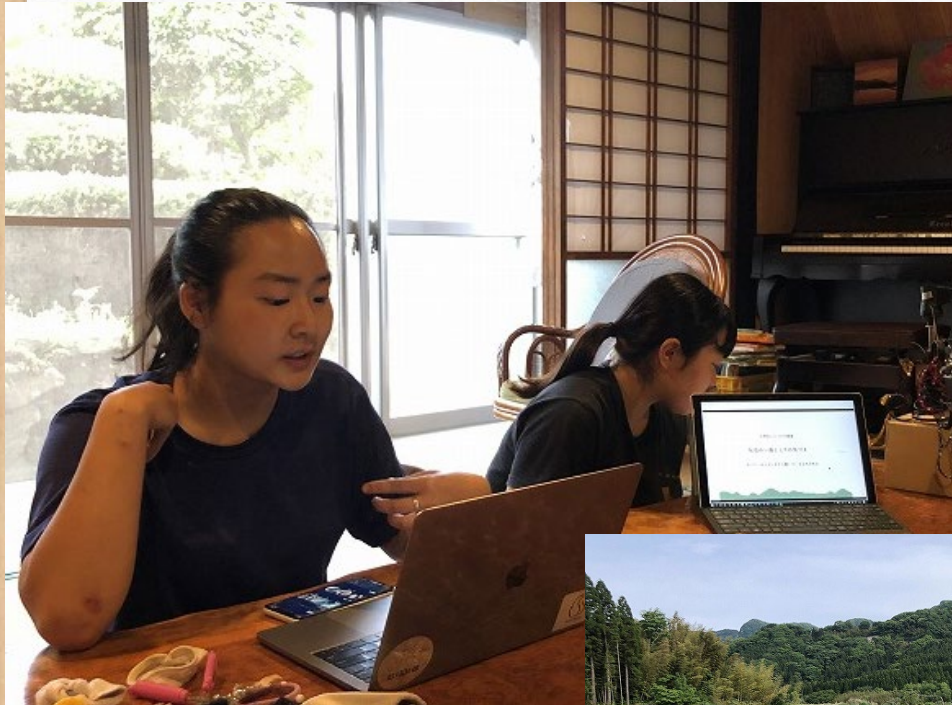




During pandemic,
students stayed for one year



Study x agriculture.





【Events】
Fashion show
Outdoor concert
Open café



SUSTAINABLE DEVELOPMENT GOALS

1 貧困をなくそう



2 飢餓をゼロに



3 すべての人に健康と福祉を



4 質の高い教育をみんなに



5 ジェンダー平等を実現しよう



6 安全な水とトイレを世界中に



7 エネルギーをみんなにそしてクリーンに



8 働きがいも経済成長も



9 産業と技術革新の基盤をつくろう



10 人や国の不平等をなくそう



11 住み続けられるまちづくりを



12 つくる責任つかう責任



13 気候変動に具体的な対策を



14 海の豊かさを守ろう



15 陸の豊かさも守ろう



16 平和と公正をすべての人に



17 パートナーシップで目標を達成しよう





No Farmer No Food
No Farmer No landscape
No Farmer No sustainable development

Thank you for your attention

